



Kollective

Kollective IQ

Better decisions made from deeper data

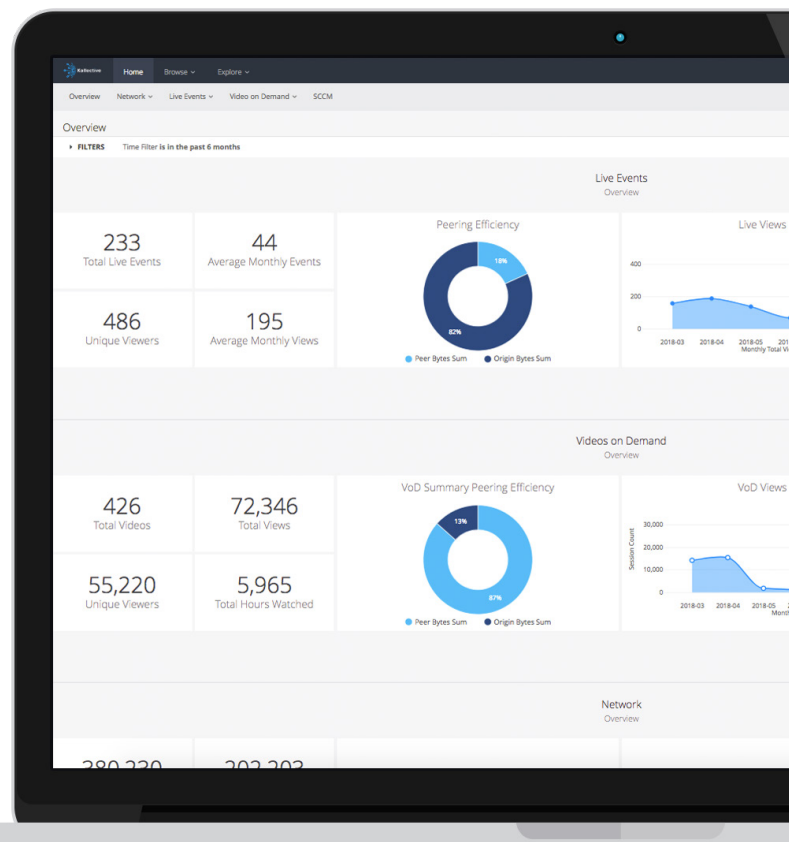
SOLUTIONS BRIEF

Kollective IQ is the most sophisticated analytics platform for ECDN. Our easy-to-consume performance dashboard visually represents what's happening across complex global enterprise networks. Communication managers and network administrators can watch real-time event and network activity, so bottlenecks can be addressed quickly, insuring peak network performance. Getting these metrics that matter to your teams in the right format and at any time, has never been easier.

Faster decisions

Making the right decisions about your network, especially during a live CEO townhall should take seconds, not minutes. With Kollective IQ, event producers and network administrators are shown role-based dashboards, so users don't have to go digging to figure out the data that matters most to them.

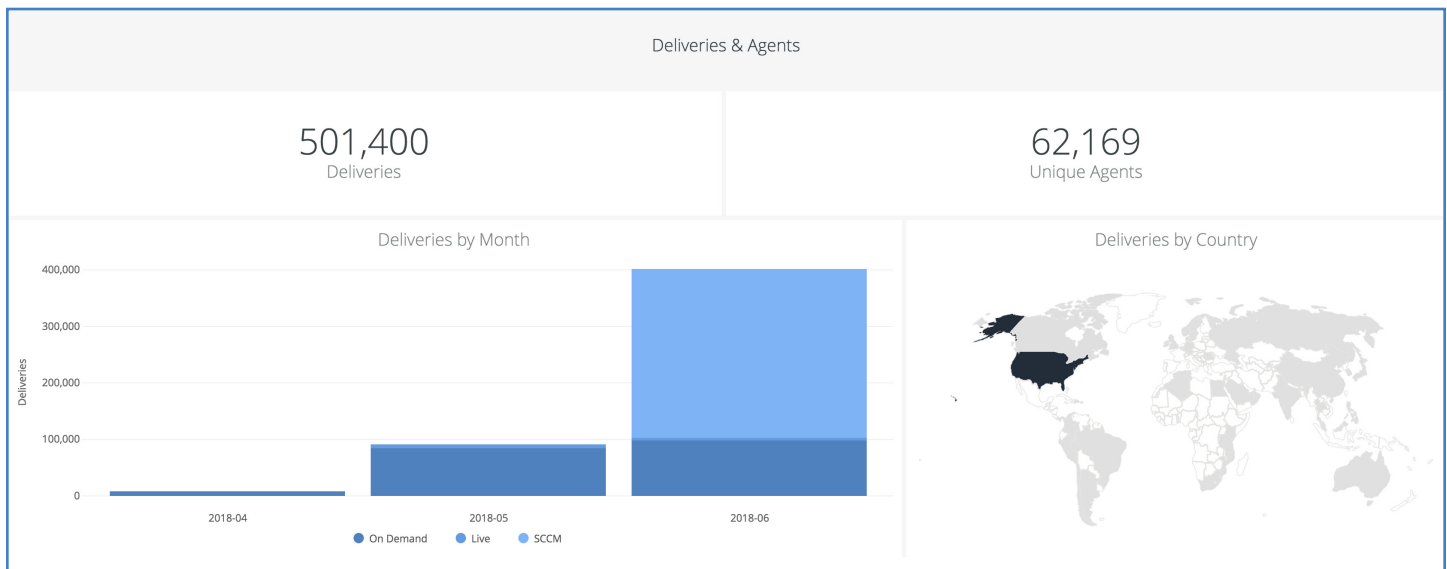
If there are network issues, perhaps a remote office that consumes a significant amount of bandwidth to download the most recent version of Windows, it's easy to see and respond quickly. Kollective IQ allows you to drill down to the edges of your network, resulting in faster fixes, more secure remote employees, and less weekend work from IT, desktop and network teams.



Better data

The data that Kollective IQ analyzes doesn't just support a live video event or a VOD playback. Kollective IQ analyzes different kinds of data and how it moves across the network. By analyzing the network impact of a live stream, VOD file, software updates or security patch deployment, we are able to quickly surface potential network congestion in advance of an event or software deployment.

The analysis that Kollective IQ does on a network is deeper than any other ECDN in the market. With more than 5 million endpoints deployed across the world, Kollective is able to deliver deeper insights than any other ECDN. With such an extensive data pipeline, Kollective delivers cutting edge analytics for teams that need to make decisions quickly and confidently.



KEY FEATURES

Cloud based

Keeping everything in the cloud makes deployment and ongoing maintenance easy as video communication increases in your organization.

Self-optimizing

The platform understands what's happening in your network and optimizes video delivery accordingly, ensuring optimal employee experience.

Scales multiple use cases

Kollective is the only ECDN to be co-engineered with Microsoft for two different use cases: video and software delivery to the edge.

Easily share the data

Any report or dashboard can be exported as a PDF, into another BI tool, or out via a webhook.