



Kollective

Kollective Video Distribution Solution

Scaling enterprise video for improved engagement and collaboration

SOLUTIONS BRIEF

When employee engagement and communication is your top priority, the worst thing that can happen is your most remote employees don't get the message. With Kollective, your video message, no matter if it's a live stream or a video on-demand (VOD) playback, will reach your most remote employees. Kollective will:

- **Securely deliver high-quality video behind the enterprise firewall, protecting your content.**
- **Integrate with the world's top enterprise video and VOD solutions, optimizing employees UX.**
- **Require no additional hardware investment, improving your ROI.**
- **Self-optimize, removing the need for manual intervention by IT teams.**

Powerful integrations

Kollective integrates with the world's leading enterprise video solution providers. Together with our partners, we ensure seamless execution and delivery of video, keeping enterprise employees engaged and boosting productivity in the modern workplace. Kollective protects precious bandwidth in your most remote office locations, by off-setting up to 99% of bandwidth when streaming a live CEO townhall through webcasting solutions, or video on-demand in VOD portals, learning management systems or intranets.

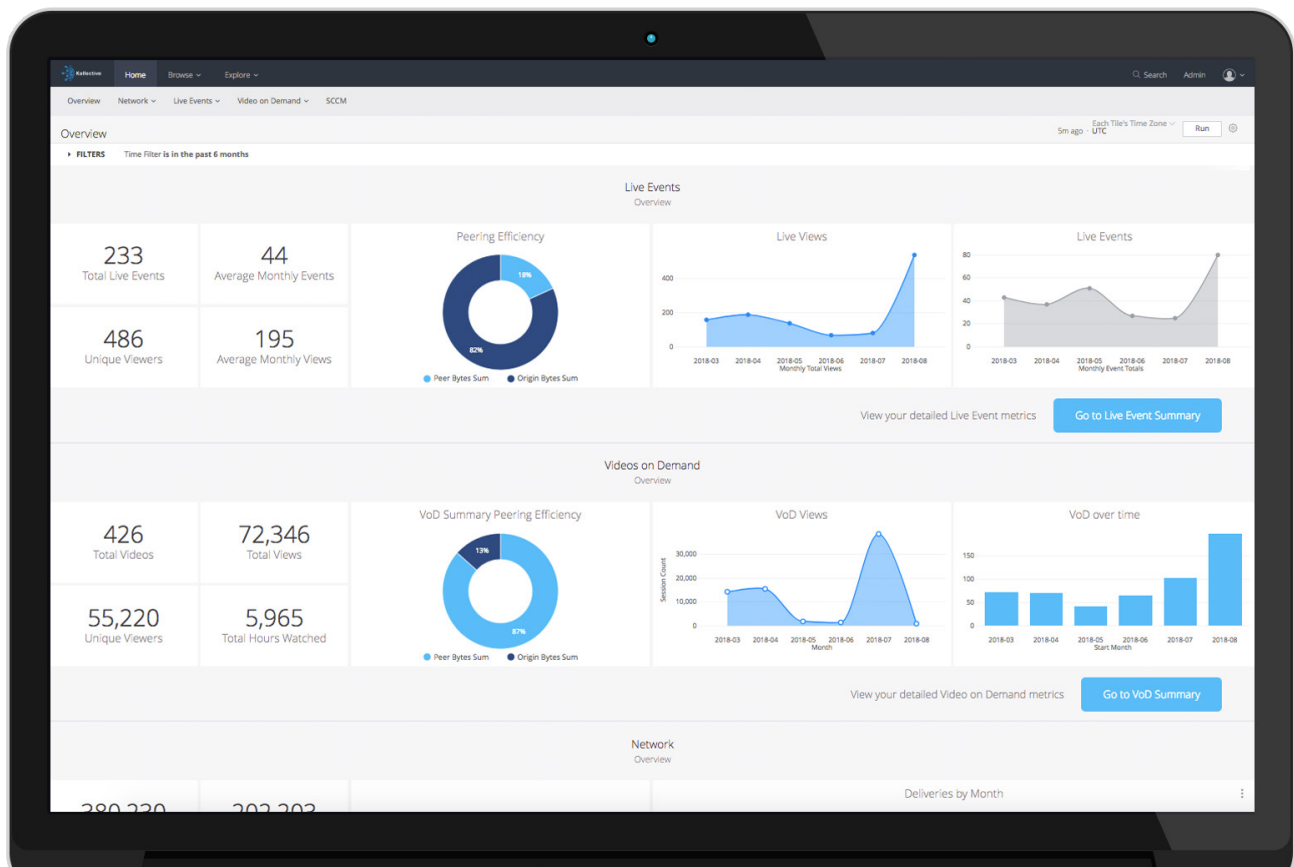
Save bandwidth and reach remote offices

Executive communication via video is efficient for dispersed organizations. Often, it's the most remote employees that aren't engaged. Providing the same quality livestream to everyone in your organization, no matter where they are located, helps build trust and clearly communicates the corporate vision, so there is no room for confusion. With Kollective in place, remote offices can offset 99% of their bandwidth consumption, insuring business critical operations continue while employees watch a CEO townhall.

“ It is very network friendly. We are able to reach every user in remote locations without investing in hardware. - **Frederic Ballara, Sr. Network Architect** ”

Decision-focused analytics

As video communication becomes the norm for large enterprises, teams that create and share those videos need to know what's working. Kollective IQ, our network analytics, serves dashboards based on an employee's unique role, so they can easily see the metrics that matter most to them. In just two clicks, content owners can see how their video performs, and network admins can watch a videos impact on the network. These dashboards and the underlying data can be easily exported to a secure FTP, via a webhook, dropped right into the enterprise BI tool of choice or they can be emailed to interested parties.



Kollectives Analytics Overview Dashboard showing high-level KPIs for Live Events as well as Video on Demand. Note the option to deep dive into a full summary for each channel.

Save IT teams time

Employees expect video communication in their work lives, and organizations that create a flawless video experience illustrate a commitment to communication and collaboration. But, moving video files across your network can quickly impact network performance. Kollective's platform learns the network's topology and adjusts real time as more video files are pushed back and forth, taking up more bandwidth. All of this happens automatically. The Kollective platform learns how to deliver live or VOD streams efficiently, without modification from your network teams. No matter when a video is consumed or shared, bandwidth is automatically preserved.

KEY FEATURES

Cloud based

Keeping everything in the cloud makes deployment and ongoing maintenance easy as video communication increases in your organization.

Self-optimizing

The platform understands what's happening in your network and optimizes video delivery accordingly, ensuring optimal employee experience.

Scales multiple use cases

Kollective is the only ECDN to be co-engineered with Microsoft for two different use cases: video and software delivery to the edge.

Powerful Analytics

We collect network data to provide insights into your performance revealing how many people are watching and engaged with your video content.

Trusted by the world's largest organizations to scale video behind the firewall,
engaging their most remote employees.

ExxonMobil



Schneider
Electric



groupm

HSBC



Panasonic

T-Mobile

